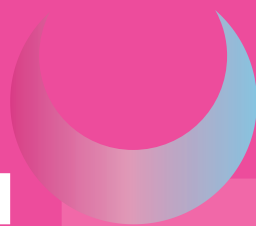


LUNA  
M C C N



CANTATA  
LOGG



## ANASTASIIA KOTENKO

Founder and creative inspirer of the brand.

Anastasiia is a vivid example of how staying true to yourself and developing your own unique style is the key to success. We are not afraid to be bright, set trends and bring our ideas to life.

# ABOUT US

**LUNAmoon is a Ukrainian brand** that has become a symbol of quality, creativity, and innovation in the nail industry. We provide nail masters products that meet the highest standards, ensuring safety and inspiring creativity.

Our materials not only guarantee perfect results, but also allow professionals around the world to work with comfort and confidence, knowing that **each product meets international quality standards, confirmed by European standards.**



LUNAmoon is more than just a brand – **it is a culture of innovation, individuality and the highest standards.** We actively set trends in the industry, helping every nail technician to be one step ahead.



# ADVANTAGES OF COOPERATION WITH US

## 01. HIGH QUALITY PRODUCTS

LUNAmoon brand products are distinguished by the highest standards of quality and safety, which is confirmed by the relevant documents: MSDS, CPSR, CPNP registration, and a GMP certificate.

## 02. PARTNER PROGRAMMES AND SUPPORT

Our partner programmes offer exclusive benefits, including special pricing, promotions and incentives to help you succeed in the market. Our support team is always in touch and ready to provide professional support.

## 03. COMPETITIVE PRICES

Benefit from attractive wholesale prices to help you maximise your profits and increase your profitability.

## 04. INNOVATIVE PRODUCTS

Stay ahead of the curve with our constantly updated product range, created to meet the latest customer needs.

## 05. MARKETING SUPPORT

We provide comprehensive marketing materials, including branded materials and content, to effectively support the promotion of our products and increase sales.



# BASE COATS

## TRANSPARENT AND REINFORCING BASES

**RUBBER BASE** is a transparent, universal, elastic base for leveling nails.

### FEATURES:

- It has a 3-4 pH acidity.
- May cause a warm and burning sensation on injured and very thin nails (not on healthy nails).
- Due to its elasticity, the base may shrink minimally on the nails after a period of 3-4 weeks.
- It can be used as a substrate for all types of coatings and for gel tips.
- The consistency is medium, self-leveling.
- The basic rule for leveling: the thickness at the edge of the nail should be 0.5 mm.
- Provides wearing without flaking for 3-4 weeks.
- It is perfectly removable both by filing and with a liquid.
- It is hypoallergenic and has a neutral smell.



RUBBER BASE is also available in a convenient marker format and has a thinner formula. **BASE MARKER** is a modern format for excellent technique.

### FEATURES:

- It is a transparent, universal base with a liquid consistency, intended as a substrate for hard materials and coloured bases.
- Adhesion is 100% with correct application technique.
- Thinner consistency than standard Rubber Base.
- Controlled amount of product ensures uniform application.
- Rational use prevents excess costs.
- Natural movements, similar to holding a pen, allow for faster application.

**ACID FREE BASE** is an elastic, transparent, acid-free base for leveling nails.

### FEATURES:

- Suitable for clients with allergies to acids in materials.
- It can be used to cover injured nails.
- It is perfectly removable both by filing and with a liquid.
- It can be used as a substrate for camouflage bases and gel polishes.
- It shrinks in a thick layer.
- Does not burn in the lamp.
- It has a medium consistency, self-leveling.
- It is acid-free.
- Suitable for pedicure.
- Provides wearability up to 3 weeks.

## AVAILABLE VARIETIES



Rubber Base



Acid free Base



Fix Base

**VOLUME: 13 ML**

**FIX BASE** is a transparent, universal, and elastic base designed to level the nail plate. It is used as a base coat under all types of surface treatments and is also suitable for extensions on gel tips.

The updated formula is similar to Rubber Base but has a thicker and more fluid consistency.

### FEATURES:

- Acidity level: 3-4 pH
- Suitable under all types of surface treatments
- Can be used for extensions on gel tips
- Medium-fluid consistency
- Hypoallergenic with a neutral scent
- Wear without lifting up to 3-4 weeks
- On very thin or damaged nails may cause a warming sensation
- Recommended lamp power: 36-48 W



## REFILLS

**RUBBER BASE** is available in a 60 ml refill package.

### FEATURES & PURPOSE OF REFILLS:

- Designed for easy and precise refilling of familiar 13 ml bottles.
- Cost-effective & optimized usage: The larger volume significantly reduces purchase frequency, making it a smart choice for professionals and studios.
- UV protection: The UV-shielded packaging safeguards the product from sunlight and UV exposure, preserving its perfect consistency and key properties.
- Convenience at work: Ideal for professionals who want to have a sufficient product supply on hand without worrying about running out at a crucial moment.

**VOLUME: 60 ML**



**FROM NOW ON, YOUR FAVORITE PRODUCTS ARE ALWAYS AT HAND – CONVENIENCE AND BENEFIT IN EVERY BOTTLE!**



Convenient dispensers: The conical cap shape ensures accurate and spill-free refilling.



## CAMOUFLAGE BASES

These are elastic, pigmented bases available with or without glitter, designed to cover and level the nails.

It provides a high level of coverage of the natural nail due to its high pigmentation. It is not suitable for leveling long nails without prior strengthening.

### FEATURES:

- Not suitable for leveling long nails without prior strengthening.
- Provide a high level of coverage of the natural nail due to high pigmentation.
- Hypoallergenic and have a neutral smell.
- Can be additionally heated to make the consistency even thinner.
- Minimal shrinkage during wear is possible due to the elasticity of the bases.
- Requires a Rubber Base substrate.
- Have an acidity of 5-6 pH.
- Perfectly removable both by filing and with liquid.
- Provide wearing without peeling for 3-4 weeks.
- Elastic and flexible.
- The basic rule for leveling: the thickness at the edge of the nail should be 0.5 mm.



- Thixotropic - they become thinner if you move the brush during the work.
- Do not flow and self-leveling very quickly.
- Have a medium consistency.

# BASE

# SHADE PALETTE

**COLOR BASES** are available in a wide range of trendy shades to suit different tastes.



**CLASSIC COVER BASES** are available in classic shades.



**CRYSTAL BASES** – bases with glitter in the most delicate shades.



**TUTTI FRUTTI BASES** are bases with multi-coloured shapes figures.



**OPAL BASES** include bases with sparkling glitter.



**CAT EYE BASES** are bases with a cat eye effect.



**VOLUME: 13 ML**

**COVER BASES IN SHADES Nº1-18 ARE ALSO AVAILABLE IN A 30 ML VOLUME**

# BASE

# GEL POLISHES

We offer a wide palette of gel polishes, featuring the trendiest shades to match every style.

From basic to bright, delicate to glittery – every client will find own perfect match.

Our gel polishes are highly pigmented, providing flawless coverage in just one or two thin coats. With a medium-thick consistency, they are effortless to apply and self-level beautifully.



LUNAmoon gel polishes provide a long-lasting, crack-resistant coating that is easy and pleasant to apply.

## SHADE PALETTE



## SHADE PALETTE

Gel Polishes in a wide range of different shades.



VOLUME: 8 ML

# SHADE PALETTE



Gel Polishes in the most trendy shades of **PASTEL** and **NUDE**.



**NEON COLLECTION** – vibrant neon shades with rich pigmentation for bold, expressive looks.



**VOLUME: 8 ML**

# SHADE PALETTE

**COLOR REFLECTION** is a collection of reflective gel polishes with glitter. When exposed to a flash of light, they create shine, making the manicure sparkle magically.



Gel Polishes in vibrant shades to **ADD COLOR** to your nails



**PERFECT COLOR** – a richly pigmented shade from the very first coat, with a non-drip formula that ensures precise application and flawless wear.



**CLOUD COLLECTION** – three white shades: arctic, soft pink, warm creamy. Inspired by Pantone trends.



**VOLUME: 8 ML**



# SHADE PALETTE

**COLOR CAT EYE** – gel polishes feature a stunning cat's eye effect.



Color Cat Eye 206   Color Cat Eye 207   Color Cat Eye 208   Color Cat Eye 209

Gel Polishes **248-252**: Combine a reflective effect with a cat's eye effect for a truly unique look.

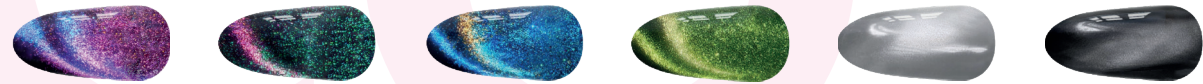


Color Cat Eye 248   Color Cat Eye 249   Color Cat Eye 250   Color Cat Eye 251   Color Cat Eye 252

Gel Polishes **253-269**: Include an additional stained-glass effect, adding depth and elegance to your manicure.



Color Cat Eye 253   Color Cat Eye 254   Color Cat Eye 255   Color Cat Eye 256   Color Cat Eye 257   Color Cat Eye 258



Color Cat Eye 264   Color Cat Eye 265   Color Cat Eye 266   Color Cat Eye 267   Color Cat Eye 268   Color Cat Eye 269

**KISS COLLECTION:** Gel Polishes **259-263** have a stained glass effect.



Color 259   Color 260   Color 261   Color 262   Color 263

VOLUME: 8 ML



# TOP COATS

**LUNAmoon top coats** will impress you with their variety. We offer universal tops, coloured tops and collections with decorative elements.

**TOP NON WIPE** is a universal top coat without a sticky layer that retains its shine for up to 4 weeks. It is best suited for dark shades as it does not give a bluish tint.

**TOP NON WIPE UV** is a top coat with a UV filter, without a sticky layer, which retains shine for up to 4 weeks. It matches perfectly with light shades and does not stain.

**TOP VELVET MAX** is a universal matte top coat without a sticky layer that goes well with any shade of nails. Top makes the manicure more interesting and unique.

**TOP CRYSTAL** is a universal top coat without a sticky layer that protects the coating from damage and preserves shine for up to 4 weeks. Top Crystal is perfect for both light and dark shades. Top Crystal is perfect for both light and dark shades.

## AVAILABLE VARIETIES



Top Non Wipe



Top Non Wipe UV



Top Crystal



Top Velvet Max

**VOLUME: 13 ML**



Thanks to its innovative formula, TOP CRYSTAL creates a strong barrier that protects nails from external damage, ensuring a flawless appearance.

Convenient dispensers: The conical cap shape ensures accurate and spill-free refilling.



## REFILLS

TOP NON WIPE, TOP NON WIPE UV AND TOP CRYSTAL are available in 60 ml refills.

### FEATURES & PURPOSE OF REFILLS:

- Designed for easy and precise refilling of familiar 13 ml bottles.
- Cost-effective & optimized usage: The larger volume significantly reduces purchase frequency, making it a smart choice for professionals and studios.
- UV protection: The UV-shielded packaging reliably protects the product from sunlight and UV exposure, ensuring a perfect consistency and preserving the key properties of the top coats.
- Convenience at work: Ideal for professionals who want to always have the right amount of product on hand without worrying about running out at a crucial moment.

**VOLUME: 60 ML**

**FROM NOW ON, YOUR FAVORITE PRODUCTS ARE ALWAYS AT HAND – CONVENIENCE AND BENEFIT IN EVERY BOTTLE!**

## TOP COATS WITH DECORATIVE ELEMENTS

### FEATURES:

- Top coats without a sticky layer.
- Have a medium consistency, which allows you to work comfortably with tops.
- Do not leak under the cuticle and perfectly cover the nail plate.
- Prevent strong heating of the nail plate during polymerisation, so they do not cause burning in the lamp.



- Provide wearing without peeling for 3-4 weeks.
- Have a neutral smell.

## SHADE PALETTE



VOLUME: 13 ML

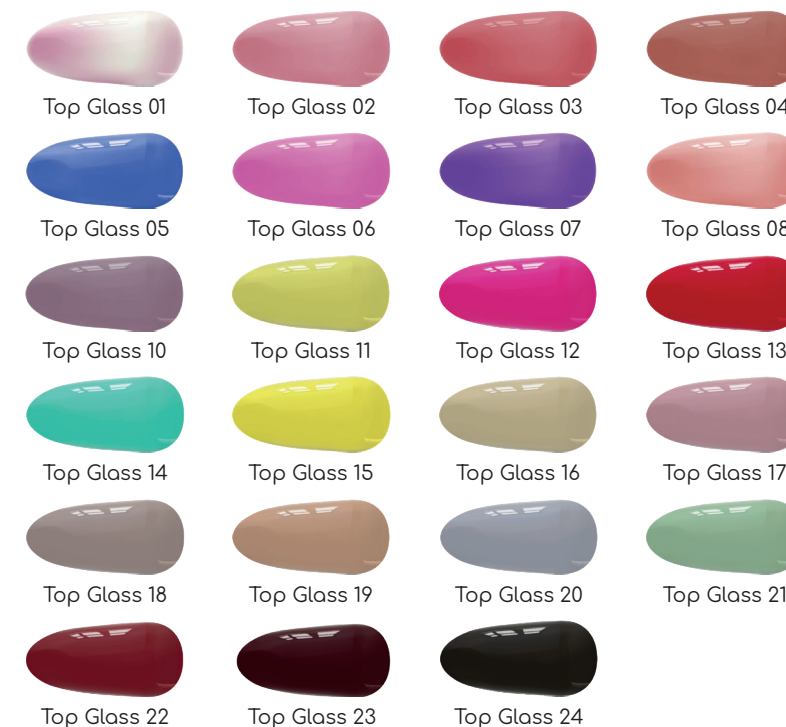
## COLOURED TOP COATS

**TOPS GLASS** are coloured tops without a sticky layer that retain their shine for up to 4 weeks. Tops Glass have a wide range of trendy shades to suit every taste. All tops are without a sticky layer.

### FEATURES:

- Have a high pigmentation.
- Provide very fast work.
- Suitable for pedicure.
- Can shrink and polymerise poorly in a very thick layer.
- Have a medium-thick consistency.
- It is necessary to do a strengthening or minimal leveling under the top.
- Do not apply twice.
- Suitable for both designs and independent coating.
- Quickly self-leveling.
- Provides wear and shine for up to 4 weeks.
- Perfectly removes both by filing and with liquid.
- Do not cause burning in the lamp.
- Acid-free.

## SHADE PALETTE



VOLUME: 13 ML

# BUILDER GELS

## CLASSIC BUILDER GELS

Polymeric light-curing materials that, due to their strength, enable significant lengthening of the nail plate.

### FEATURES:

- Acid-free.
- Provide cushioning and do not crack upon impact.
- Medium consistency.
- Medium pigmentation, covers the free edge.
- Suitable for all extension techniques.
- Do not cause burning in the lamp.
- Become thicker in the cold and thinner in the warm.
- Thixotropic - become thinner if you move the brush during the work.
- It can be further heated to make the gel thinner.



- Harden at a thickness of 1 mm. If the thickness is less than 1 mm, they can bend slightly, but this does not affect the wearing experience.
- Do not shrink and hold the arch well.
- Rubber Base is required as a substrate.

## SHADE PALETTE

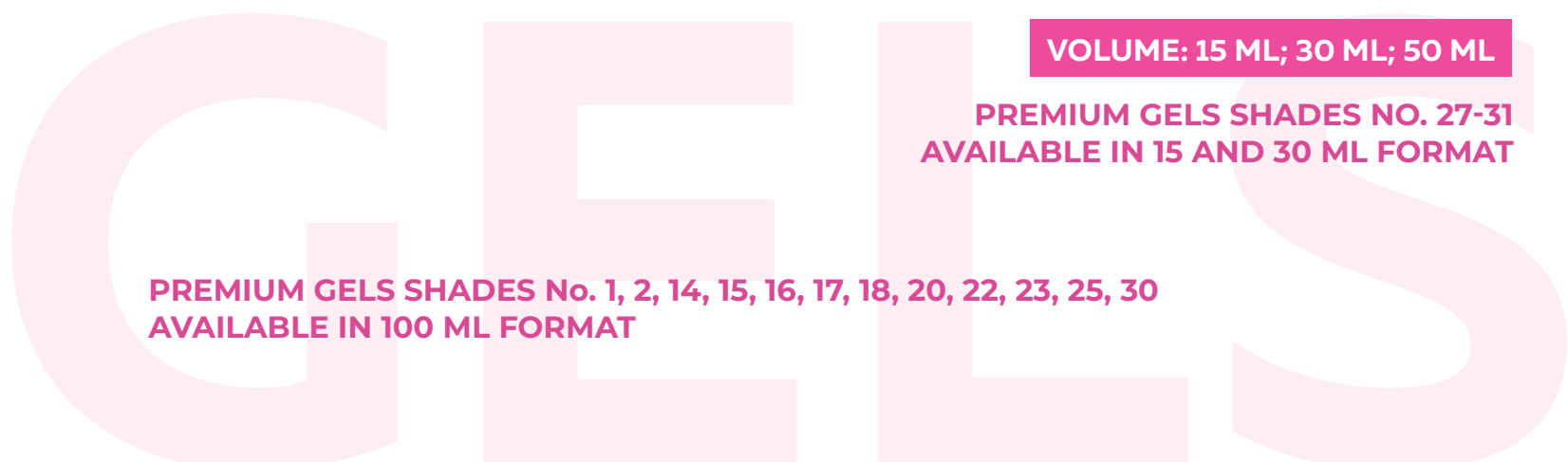
**PREMIUM GELS** – gels in the most delicate shades.



**VOLUME: 15 ML; 30 ML; 50 ML**

**PREMIUM GELS SHADES NO. 27-31  
AVAILABLE IN 15 AND 30 ML FORMAT**

**PREMIUM GELS SHADES No. 1, 2, 14, 15, 16, 17, 18, 20, 22, 23, 25, 30  
AVAILABLE IN 100 ML FORMAT**



**DIAMOND GELS** – gels with glitter in the most delicate shades.



**SHIMMER GEL** is a sculpting gel that combines the exceptional strength of a builder gel with the refined aesthetics of a shimmer effect. It is designed for strengthening natural nails as well as extensions, providing full coverage and a flawless manicure look until the next correction.



## PROPERTIES:

- A blend of fine gold and larger silver shimmer that does not settle and spreads evenly.
- Fully covers the free edge and creates a smooth yet rich surface.
- Thixotropic material – the gel is easy to work with a brush and self-levels effortlessly.
- Remains flexible in a thin layer (no cracking), and firm in the levelling layer with excellent shock absorption.
- Suitable for extensions on both lower and upper forms, as well as for strengthening.
- Cures perfectly, does not shrink, and holds the C-curve well.



**IMPORTANT:** Requires a rubbed-in base coat using LUNAmoon Rubber Base.



## JELLY GELLY

**JELLY GELLY** are gels with a thick, jelly-like and flexible texture that are used for modelling, corner extension and creating various designs. The material is highly pliable and plastic, allowing it to be molded into any shape without the need for additional filing. This flexibility significantly reduces the time required for nail extensions by an hour or more.

### FEATURES:

- Have a thick consistency.
- Do not cause burning in the lamp because they are low-temperature.
- Hold the arch perfectly and do not deform.
- Acid-free.
- Have medium pigmentation, cover the free edge.
- Suitable for "dual form" extensions.
- Become thicker in the cold and thinner in the warm.
- Thixotropic - become thinner if you move the brush during work.
- The gel can be further heated to make it thinner.
- Rubber Base is required as a substrate.
- Have a thick consistency.

### SHADE PALETTE



Jelly Gelly 1



Jelly Gelly 2



Jelly Gelly 3



Jelly Gelly 4



Jelly Gelly 5



Jelly Gelly 6

**VOLUME: 15 ML**

# GELS

## LIQUID GELS LIGHT ACRYGELS

This is an innovative material for strengthening, leveling and extending the corners of the nails.

### FEATURES:

- Acid-free, medium consistency.
- Have medium pigmentation, cover the free edge.
- Suitable only for strengthening nails and for extending the corners of the nail.
- Permissible coating thickness is 0.5 mm on the edge of the nail, 1 mm on the apex.
- Provide cushioning and do not crack upon impact.
- When strengthening with these gels, it is necessary to file the natural nail.
- Require a Rubber Base substrate.
- Can be heated additionally to make the gels thinner.



LIGHT ACRYGELS are symbioses of polygels and bases. They consist of 60–80% acrylic copolymer (the main component of polygels) and a small amount of base coating components. Such gels can completely replace bases.

## SHADE PALETTE



VOLUME: 13 ML

SHADES N°1-9, 16, 17, 26-35, 38-40, 46-56 AVAILABLE IN 30 ML VOLUME  
 SHADES N°1-9 AVAILABLE IN 50 ML VOLUME



## FIBER GEL WITH FIBERS UGI-FR

A high-tech gel with reinforcing fibers for emergency restoration and strengthening of the natural nail plate.

Fiber Gel is enhanced with ultra-fine fibers that strengthen the nail from within, rather than just leveling the surface. It is ideal for strengthening and light extensions, especially on weak and damaged nails.

Its balanced texture is easy to control, does not run, self-levels smoothly, and cures comfortably under a lamp.



Fiber Gel 01



Fiber Gel 02

### SUITABLE FOR:

- Nail strengthening
- Structure restoration
- Crack repair



**CURING TIME: LED: 60-90 SECONDS / UV: 2-3 MINUTES**

**VOLUME: 5 ML**

# GELS

# LIQUID GLITTERS

**METALLIC GEL** – metallic gel paint for nail designs.

**HOLOGRAPHIC METALLIC GEL** – holographic metallic gel paint for nail designs.

## FEATURES:

- Before applying the paints, it is necessary to remove the sticky layer from the nails.
- Not suitable for creating relief designs or for applying in a thick layer.
- When applying the top, do not press hard on the brush, as strong pressure can smear the chrome and holographic effect.
- After applying the top coat, the gloss may be reduced by 10-20%, as the top coat absorbs part of the chrome from the paint. It is best to use a top without a sticky layer from LUNAmoon.

## SHADE PALETTE



Metallic Gel 1



Holographic Metallic Gel

Do not cover the entire nail with paint. This paint is not suitable for French manicure.

It is possible to cover the entire nail, provided that a powerful lamp is used and a very thin layer is applied. We do not recommend using this paint for French manicure.

**VOLUME: 5 ML**

**PLATINUM GELS** are glitter gels saturated with multi-coloured glitter to create designs. It is a soft material that is not suitable for extensions or strengthening.

## SHADE PALETTE



Platinum Gel 1



Platinum Gel 2



Platinum Gel 3



Platinum Gel 4



Platinum Gel 5

**VOLUME: 5 ML**

## FEATURES:

- Due to their pigmentation, glitter gels allow you to perfectly cover the nail plate, even in one thin layer.
- The consistency is medium thick.
- Do not spread and do not get under the cuticle.
- Glitters of different sizes and shapes are perfectly distributed on the nail plate, giving them a spectacular effect.



Important! For the application of Holographic Metallic Gel: apply the gel paint and wait one minute, until the holographic flecks appear and then cure in a lamp.



**BUBBLE GELS** are thick, medium-viscosity gels saturated with multi-coloured glitter. The glitter varies in shape and size and is made of soft material, making these gels unsuitable for extensions and strengthening.

**FEATURES:**

- High pigmentation.
- Medium-thick consistency.
- Not suitable for extension and strengthening.
- Apply in a thin layer.
- Dry in original lamps with quartz diodes for at least 90 seconds.

**SHADE PALETTE**



**VOLUME: 5 ML**

**SAPHIRE GELS** are glitter-rich gel pastes, ideal for creating designs. These gels are made of soft materials, making them unsuitable for extensions and strengthening.

**SHADE PALETTE**



**VOLUME: 5 ML**



## DRY GLITTER SET BROKEN GLASS

The set includes 6 different shades of glitter.  
The glitters are in the form of thin flakes designed for nail art.

Broken Glass dry glitters will add trendiness and brightness to any manicure. Thanks to the wide variety of shades in the set, you can create the most creative designs.



## SHADE PALETTE



**VOLUME: 0.3 G (PER PIECE)**

**BROKEN GLASS DRY GLITTERS ARE AVAILABLE ONLY IN SETS (6 PCS).**

## IRON LADY RUB POWDER SET

The set includes 6 different shades of rub powders. These are premium-quality metallic powders that apply evenly and easily, ensuring flawless coverage without gaps or streaks.

They can be applied over both light and dark base coats to achieve a variety of effects.

- On a light base: a soft metallic sheen with refined shine.
- On a dark base: intense, deep metallic shades with strong contrast.

Best metallic effect is achieved on a dark base.

## SHADE PALETTE



**VOLUME: 0.3 G (EACH)**

**AVAILABLE ONLY IN SETS OF 6.**

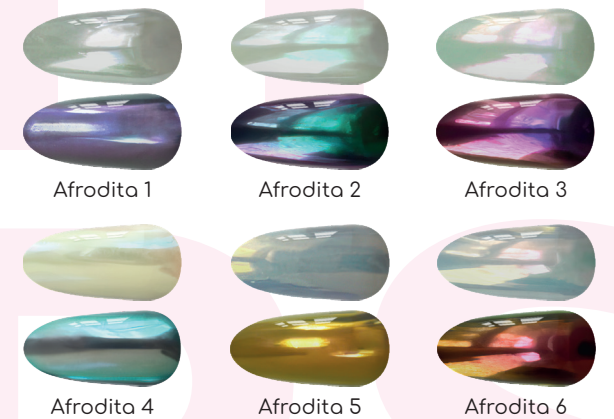
## AFRODITA RUB POWDER SET

The set includes 6 different shades of ultra-fine premium-quality powders.

They apply smoothly and evenly, ensuring flawless coverage without gaps or streaks. Perfect for both light and dark bases:

- On light colors: gentle, pearly glow
- On dark colors: bright reflections

## SHADE PALETTE



**VOLUME: 0.3 G (EACH)**

**AVAILABLE ONLY IN SETS OF 6.**

# ADDITIONAL MATERIALS



## Double-Sided Cat Eye Magnet

A professional tool for creating sharp, controlled highlights in Cat Eye effect materials.

The magnet has two sides with different polarities: one attracts magnetic particles for a defined light stripe, while the other repels them for a soft or deep highlight.

Adjust the angle and position to control the shine's direction, shape, and intensity.

## DUAL FORMS FOR NAIL EXTENSIONS

Made of elastic and durable ABS plastic, dual forms are convenient to use and reusable. They provide precise support for the nail plate during gel or acrylic extensions and allow the creation of various shapes.

The transverse arch of the forms allows modeling of natural nail silhouettes, while the material's durability ensures easy removal and correction without deformation. The forms are compatible with poly-gel, builder gel, and gel-jelly, making them universal for professional use.



ALL DUAL FORMS ARE SUPPLIED IN PACKS OF 120 PIECES. SHORT ALMOND FORMS COME IN PACKS OF 100 PIECES.



## SHORT CLASSIC SQUARE

- Transverse arch 30–35%.
- Has a slight onychogryphotic curve, giving it a unique look.
- Minimally short length.
- Apex not strongly pronounced, making the shape look more natural.
- Free edge slightly narrows towards the tip, creating a harmonious silhouette

## CLASSIC SQUARE

- Transverse arch 30–35%.
- Has a light curve that gives the form a natural look.
- Apex not strongly pronounced, located closer to the cuticle area.
- Free edge slightly narrows towards the tip; this form does not create a sharp square.

## CLASSIC ONYCHOGRYPHOTIC SQUARE

- Transverse arch 30–35%.
- Has a curve that allows working with more onychogryphotic nails.
- Apex not strongly pronounced, but due to the curve the nails will have a natural effect.
- Free edge slightly narrows towards the tip; lower parallels are curved.

## CLASSIC SALON SQUARE

- Transverse arch 30–35%.
- Apex not strongly pronounced, located closer to the stress zone.
- Straight lower parallels without curvature.
- Straight side parallels, which allow creating a clear square.

## SHORT ARCHED SQUARE

- Transverse arch 50%.
- Apex absent.
- For full extension requires building up the apex with liquid gel or acrylic.
- Free edge slightly narrows towards the tip.
- Straight lower parallels.



## SKELETON ARCHED SQUARE

- Transverse arch 50%.
- Nail bed absent, serves as a base for the free edge.
- For full extension requires building up the apex with liquid gel.
- Straight side parallels.
- Straight lower parallels.

## SALON ARCHED SQUARE

- Transverse arch 45–50%.
- Apex located closer to the cuticle area.
- Straight side parallels.
- Straight lower parallels.

## SHORT BALLERINA

- Transverse arch 40–45%.
- Apex located closer to the cuticle area.
- Free edge narrows towards the tip.
- Straight lower parallels.

## SALON BALLERINA

- Transverse arch 40–45%.
- Apex located closer to the stress zone.
- Free edge narrows towards the tip.
- Straight lower parallels.

## ARCHED BALLERINA

- Transverse arch 50%.
- Apex located closer to the stress zone.
- Free edge narrows towards the tip.
- Straight lower parallels.



## SHORT ALMOND

- Transverse arch 40%.
- Apex located closer to the cuticle area.
- Free edge narrows towards the tip.
- Straight lower parallels.

## SALON ALMOND

- Transverse arch 40–45%.
- Apex located closer to the stress zone.
- Free edge narrows towards the tip.
- Straight lower parallels.

## LONG ALMOND XL

- Transverse arch 40–45%.
- Apex located closer to the stress zone.
- Free edge narrows towards the tip.
- Straight lower parallels.

## ONYCHOGYPHOTIC

- Transverse arch 40%.
- Due to its curved shape, the apex is absent.
- Straight side parallels, allowing to create a short clear square.
- Lower parallels are curved due to the overall shape.



# NAIL TOOLS

## DOUBLE-SIDED BRUSH

This versatile brush is designed for use with gel or base and is made of natural bristles (11 mm long on both sides). One side is perfect for applying gel. The other side is ideal for fine lines and French manicures.

### FEATURES:

- The bristles are securely fixed in the handle and do not shed.
- Features a long handle for enhanced convenience and ease of use.
- Multifunctional and perfect for creative designs.
- Easy to clean with any type of cleaning agent.
- Ergonomic design ensures hands don't get tired, even during extended use.
- Suitable for working with both natural and artificial nails.



# NAIL PLATE PREPARATION

## NAIL PREP

**NAIL PREP** is a universal product that performs two functions at once: a degreaser and a dehydrator. It effectively prepares the nail plate for coating.

### FEATURES:

- Works only on the upper layers of the natural nail.
- Cleanses, dehydrates, and degreases the nail plate without damaging or overdrying it.
- Enhances adhesion between the natural nail and artificial coating.
- Does not overdry the skin around the nail.
- Reduces the risk of lifting.
- Has a mango fragrance.

**VOLUME: 150 ML; 400ML; 1000 ML**

Updated pump! We have taken into account all feedback from nail technicians and introduced a highly durable mechanism that has undergone extensive reliability testing. Using your favorite product is now even more comfortable: the pump ensures smooth pressing and consistently withstands high working loads.



## ACID-FREE NAIL PRIMER ULTRABOND

Ultrabond acid-free primer is used to enhance the adhesion between artificial coating and the natural nail plate. The product works with a double-sided tape effect.

### FEATURES:

- Contains safe ingredients and does not damage the nail plate.
- Provides excellent tackiness after drying, ensuring long-lasting wear even on the most problematic nails.
- Used in gel systems as a bonding agent to improve adhesion between the material and the nail plate during nail modeling.
- Forms a sticky layer after application.
- Acid-free.

## ACID NAIL PRIMER

Acid Primer is essential for degreasing and disinfecting the nails before gel or acrylic extensions.

The product ensures strong adhesion between the artificial material and the natural nail plate and helps prevent the development of pathogenic flora under the artificial coating.

Apply a small amount of primer to prepared and cleansed nails before applying gel or acrylic, avoiding contact with the cuticle and sidewalls.

**Effect — maximum adhesion of any coating, even on problematic nails, and long-lasting wear.**

**VOLUME: 13 ML**



## CUTICLE OIL

The oil is available in four scents: vanilla, strawberry, bubble gum, and cream soda. It is an effective product for nail and cuticle care.

### FEATURES:

- Strengthens nails and nourishes them with nutrients.
- Easy to apply and absorbs in just a few minutes.
- Has a pleasant fragrance.
- For maximum effect, daily use is recommended.



The product contains valuable essential oils that moisturize and soften the cuticle. The skin on the hands also becomes smoother and more supple, and with regular use, the overall condition of the skin improves noticeably.

**VOLUME: 30 ML**

## DRY CUTICLE PHOTOSHOP OIL

The dry oil is available in two fragrances: strawberry with cream and melon — it is a dry oil with a dispenser for cuticle care. It leaves no greasy marks or shine on the skin, has moisturizing and nourishing properties. The oil accelerates the regeneration processes of damaged tissues and helps restore them after a manicure.

### FEATURES:

- Leaves no greasy residue on the skin.
- Absorbs quickly.
- Contains natural ingredients.
- Comes with a convenient brush.

**VOLUME: 5 ML; 30 ML**



The 30 ML dry oil contains shimmer, which creates a delicate sparkling effect, enhancing the natural skin tone and giving it an incredible look.



## SCRUB "SWEET BUBBLE KISS"

The "SWEET BUBBLE KISS" bubble gum scrub provides the skin with gentle and exceptional care, combining effective cleansing with the pleasant scent of sweet bubble gum. This scrub delicately removes dead skin cells, promoting renewal. Its truly unique texture, sufficiently elastic and soft, makes the skincare process comfortable and enjoyable.

### FEATURES:

- Gentle and effective cleansing.
- Hydration and nourishment.
- Pleasant bubble gum fragrance.
- Suitable for all skin types.
- Suitable for full-body exfoliation, except the face.
- Professional results in any conditions.

**VOLUME: 200 g**

## HAND CREAM "STRAWBERRY DESSERT"

The "STRAWBERRY DESSERT" hand cream provides delicate hydration and an incredible strawberry-and-cream fragrance. Thanks to its innovative lamellar formula, this cream deeply nourishes the skin, restores its natural balance, and protects against dryness.

### FEATURES:

- Lamellar technology for deep hydration.
- Delicate strawberry and cream scent.
- Shimmer effect for a subtle glow.
- Absorbs quickly without leaving a greasy residue.
- Suitable for daily use.
- Suitable for all skin types.

**VOLUME: 300 ML**

**ALSO AVAILABLE IN 30 ML**





# BRANDED BAG

## SHOPPER BAG

The shopper bag is made of durable fabric, combining style and practicality. Lightweight yet sturdy, it's perfect for everyday shopping and carrying essentials.



# BAGS

**EXPORT DEPARTMENT**  
export@lunamoon.in.ua

**OFFICIAL INSTAGRAM**  
**ON THE INTERNATIONAL MARKET**  
@lunamoon\_global

**LUNA**  
M O O N

**CONTACT NUMBER**  
☎️ +380936399063  
+380930992440

**OR NICK IN TELEGRAM**  
@lunamoonexport  
@lunamoonteam